

Greater Terrace Area

Curbside Organics, Recycling
& Garbage Collection Schedule

INFORMATION – GUIDE – 2021



NEVER MISS ANOTHER COLLECTION DAY!

Download the FREE Recycle Coach™ app



Your collection
schedule and notices
at your fingertips.

Collection Schedule						
September 2021						
S	M	T	W	T	F	S
29	30	31	1	2	3	4
5	6	7	8	9	10	11
12	13	14	15	16	17	18
19	20	21	22	23	24	25
26	27	28	29	30	1	2
3	4	5	6	7	8	9

Revised: December 2020



Regional District of
Kitimat-Stikine



Love this place.
Reduce your waste.

Curbside Collection Guidelines

- Materials should be curbside by 8:00 am on the designated collection day, and no earlier than 10:00 pm on the day before collection day.
- Weight limit: 23 kg./50 lbs. for all bins and bags.
- Place all containers within 2 m of the roadway.
- Remove empty containers no later than 10:00 pm on collection day.
- Do not tie down lids of containers.

Bi-weekly Recycling Collection



- Unlimited recycling is accepted each collection. Use bags in your bins and ensure your recycling bin is identifiable.
- Flatten cardboard and place beside your recycling can in bundles not exceeding 1 cubic metre (36" x 36" x 36").
- Rinse containers to remove food residue.

Bi-weekly Garbage Collection

- Garbage must be bagged and placed in a rigid, waterproof can with a lid.
- For extra garbage, bag tags can be purchased at the Regional District office for \$2 each in a group of 10. A maximum of 4 bag tags can be used per collection.
- Not Accepted in Garbage Collection: Recyclables, bulky items such as furniture, appliances, electronic products, liquids, and organic materials.



Weekly Organics Collection

- Six items are accepted per collection: up to two containers with lids (kitchen or yard waste) and up to four bundles or kraft paper bags of yard waste.
- Containers, bundles, and kraft bags must not exceed 23 kg./50 lbs. each. Containers must not exceed 99 L. Bundles may not exceed the dimensions of a kraft bag (16" x 12" x 35").
- Compostable liners may be used in containers although are not required.



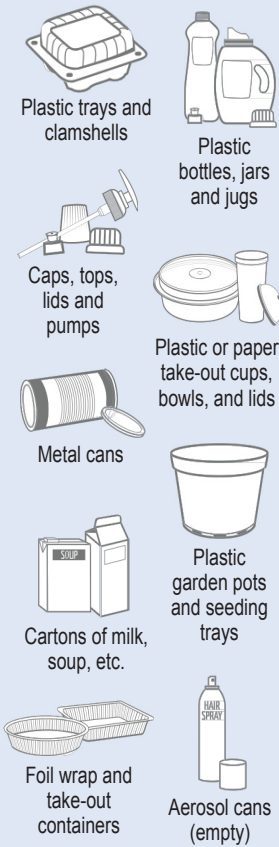
How To: Bi-weekly Recycling Collection



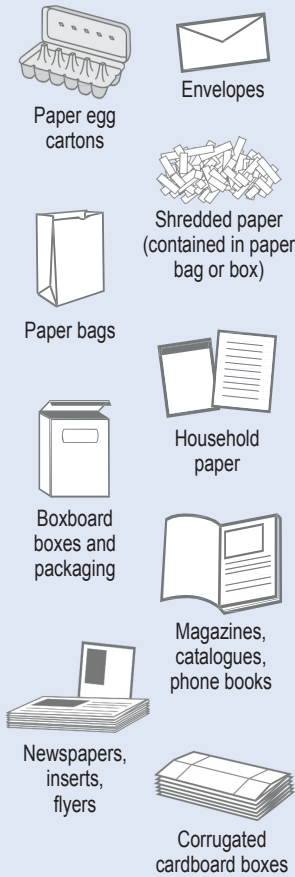
TO THE CURB
**8:00
am**

ACCEPTED

Mixed Containers



Mixed Paper



NOT ACCEPTED

Do **NOT** place
in curbside
recycling



**GLASS, PLASTIC BAGS / OVERWRAP AND STYROFOAM
ARE NOT ACCEPTED CURBSIDE. PLEASE RETURN TO DEPOT.
DO-YOUR-PART RECYCLING IS LOCATED AT 3467 HWY 16 E.**

2021 Collection Schedule

Legend Recycle Garbage Organics No Collection

No Collection on the Following Days: New Year's Day, Family Day, Good Friday, Victoria Day, Canada Day, BC Day, Labour Day, Thanksgiving Day, Remembrance Day, Christmas Day, Boxing Day. **Collection occurs the following business day.**



TO THE CURB
8:00 am

MARCH 2021						
S	M	T	W	T	F	S
	1	2	3	4	5	6
7	8	9	10	11	12	13
14	15	16	17	18	19	20
21	22	23	24	25	26	27
28	29	30	31			

APRIL 2021						
S	M	T	W	T	F	S
				1	2	3
4	5	6	7	8	9	10
11	12	13	14	15	16	17
18	19	20	21	22	23	24
25	26	27	28	29	30	

MAY 2021						
S	M	T	W	T	F	S
						1
2	3	4	5	6	7	8
9	10	11	12	13	14	15
16	17	18	19	20	21	22
23	24	25	26	27	28	29
30	31					

JANUARY 2021						
S	M	T	W	T	F	S
					1	2
3	4	5	6	7	8	9
10	11	12	13	14	15	16
17	18	19	20	21	22	23
24	25	26	27	28	29	30
31						

FEBRUARY 2021						
S	M	T	W	T	F	S
	1	2	3	4	5	6
7	8	9	10	11	12	13
14	15	16	17	18	19	20
21	22	23	24	25	26	27
28						

JUNE 2021						
S	M	T	W	T	F	S
		1	2	3	4	5
6	7	8	9	10	11	12
13	14	15	16	17	18	19
20	21	22	23	24	25	26
27	28	29	30			

JULY 2021						
S	M	T	W	T	F	S
				1	2	3
4	5	6	7	8	9	10
11	12	13	14	15	16	17
18	19	20	21	22	23	24
25	26	27	28	29	30	31

AUGUST 2021						
S	M	T	W	T	F	S
1	2	3	4	5	6	7
8	9	10	11	12	13	14
15	16	17	18	19	20	21
22	23	24	25	26	27	28
29	30	31				

SEPTEMBER 2021						
S	M	T	W	T	F	S
			1	2	3	4
5	6	7	8	9	10	11
12	13	14	15	16	17	18
19	20	21	22	23	24	25
26	27	28	29	30		

OCTOBER 2021						
S	M	T	W	T	F	S
					1	2
3	4	5	6	7	8	9
10	11	12	13	14	15	16
17	18	19	20	21	22	23
24	25	26	27	28	29	30
31						

NOVEMBER 2021						
S	M	T	W	T	F	S
	1	2	3	4	5	6
7	8	9	10	11	12	13
14	15	16	17	18	19	20
21	22	23	24	25	26	27
28	29	30				

DECEMBER 2021						
S	M	T	W	T	F	S
			1	2	3	4
5	6	7	8	9	10	11
12	13	14	15	16	17	18
19	20	21	22	23	24	25
26	27	28	29	30	31	

How To: Bi-weekly Garbage Collection One 121 L lidded can of bagged garbage not exceeding 23 kg / 50 lbs is accepted each collection.

Missed Collection?

Contact Geier Waste Services about missed collections and the collection service. For billing and additional program information, contact the Regional District.



If you are physically unable to bring bins to the curb, please contact us to request "Container Management".

What to do with Large Items?

Bulky items such as large furniture are not accepted in curbside collection. Please call or visit www.rdks.bc.ca for items that are accepted at the Thornhill Transfer Station.

Oops!

"Oops Stickers" help you use the collection service correctly. Most "Oops Stickers" messages are triggered by safety. If the can is too heavy, contain visible dangerous materials, or too far/too close to the roadway, it may be unsafe for the collection hauler or other vehicles. The stickers will let you know.

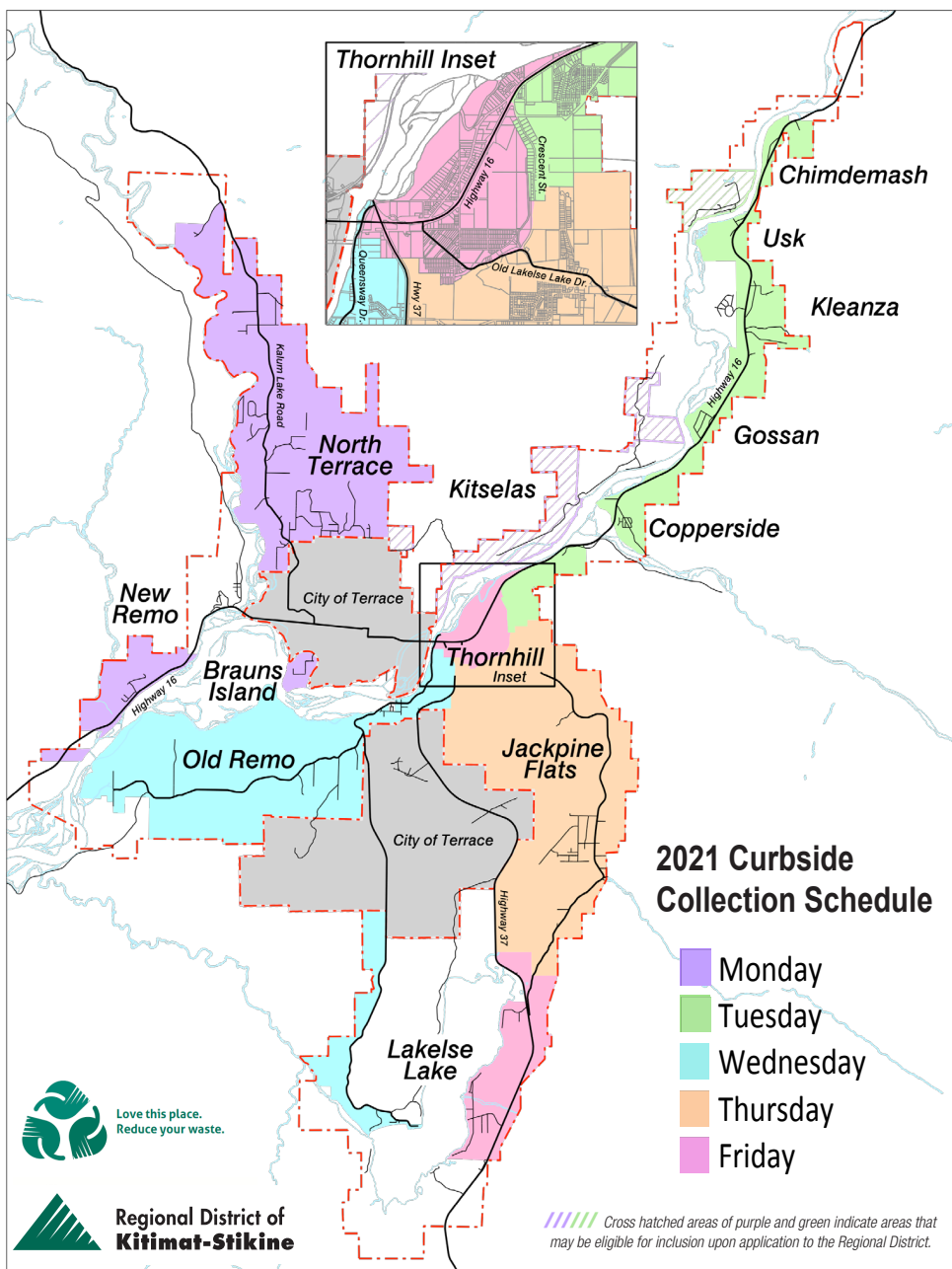
Have Extra Garbage?

Extra bag tags are available for \$2 each in a group of 10. A maximum of 4 bag tags may be used per collection. For excess medical wastes, contact us to apply for a **Medical Waste Exemption**.





Service Area Map



How To: Weekly Organics Collection

Bagging Requirements

- Organics that contain kitchen and food waste must be placed in rigid, lidded containers.
- The Regional District recommends, although does not require, the use of compostable bags to help keep bins clean, reduce odour, and reduce animal attraction.



COMPOSTABLE

Biodegradable Products Institute | US COMPOSTING COUNCIL

- Do not use plastic or biodegradable bags. Biodegradable plastic does not compost**

To receive collection, please:

TO THE CURB

8:00 am

Accepted Materials



! If unacceptable materials are found in your Organics, the container will not be collected. Remove any unacceptable materials and it will be picked up on your next collection.

Not Accepted Materials

These items are **not accepted** and should be recycled or safely disposed of.

- Lumber and other wood products
- Rocks, soil, and sod
- All plastics
- Fecal matter and animal waste
- Diapers



Questions? Visit www.rdks.bc.ca
or call us at 250.615.6100

Regional District of Kitimat-Stikine – 7

Essential Contact Information

For curbside
pick-up inquiries



GEIER WASTE SERVICES

250-638-1100

PO Box 38, Terrace, B.C. V8G 4A2

Phone: 250-638-1100

Email: geierwasteservices@citywest.ca

For recycling facility
hours and inquiries

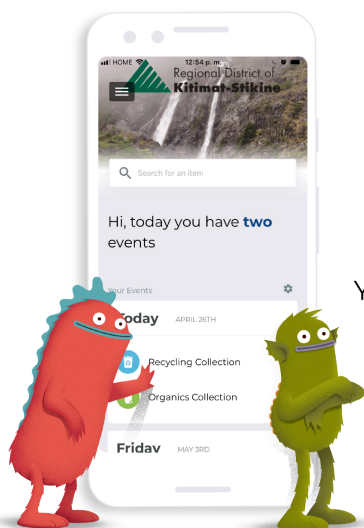


DO-YOUR-PART RECYCLING

3467 Hwy 16E, Terrace, B.C. V8G 3P1

Phone: 250-615-7692

Website: www.doyourpart.ca



Recycling made easy.

Download the **FREE** app on
your app store today!

You get:

- A personalized collection schedule
- Custom collection reminders
- **What Goes Where?** search tool
- **What type of recycler are you?** quiz
- Report A Problem feature

