

## Essential Contact Information:

Contact for curbside  
pick-up inquiries



**GEIER WASTE  
SERVICES**

**250-638-1100**

PO Box 38, Terrace, B.C. V8G 4A2

Phone: 250-638-1100

Email: geierwasteservices@citywest.ca

Contact for recycling  
facility hours & inquiries



**DO-YOUR-PART  
RECYCLING**

3467 Hwy 16E

Phone: 250-615-7692

Website: www.doyourpart.ca

# Greater Terrace Area

Curbside Organics, Recycling  
& Garbage Collection Schedule

# INFORMATION – GUIDE – 2020

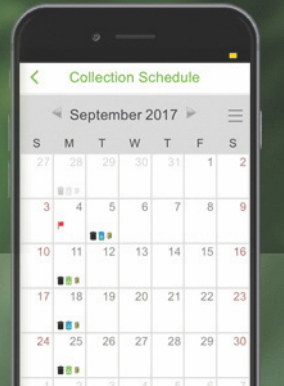


## NEVER MISS ANOTHER COLLECTION DAY!

Download the FREE Recycle Coach™ app



Your collection  
schedule and notices  
at your fingertips.



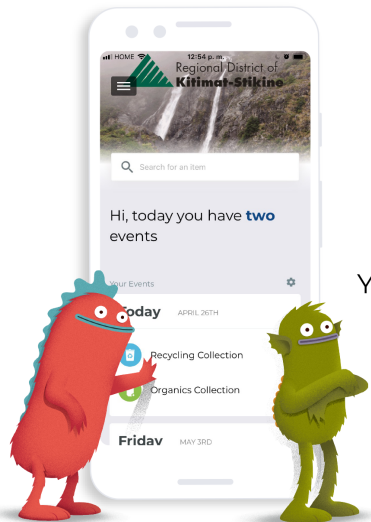
Revised: December 2019



## Recycling made easy.

Download the FREE app on  
your app store today!

- You get:
- A personalized collection schedule
  - Custom collection reminders
  - **What Goes Where?** search tool
  - **What type of recycler are you?** quiz
  - Report A Problem feature



## Curbside Collection Guidelines

- Materials should be curbside by 8:00 am on the designated collection day, and no earlier than 10:00 pm on the day before collection day.
- Weight limit: 23 kg. /50 lbs. for all bins and bags.
- Place all containers within 2 m of the roadway.
- Remove empty containers no later than 10pm on collection day.
- Do not tie down lids of containers.

### Bi-weekly Recycling Collection



- Unlimited recycling is accepted each collection. Use bags in your bins and ensure your recycling bin is identifiable.
- Flatten cardboard and place beside your recycling can in bundles not exceeding 1 cubic metre (36" x 36" x 36").
- Rinse containers to remove food residue.

### Bi-weekly Garbage Collection

- Garbage must be bagged and placed in a rigid, waterproof can with a lid.
- For extra garbage, bag tags can be purchased at the Regional District office for \$2 each in a group of 10. A maximum of 4 bag tags can be used per collection.
- Not Accepted in Garbage Collection: Recyclables, bulky items such as furniture, appliances, electronic products, liquids, and organic materials.



### Weekly Organics Collection

- Six items are accepted per collection: up to two containers with lids (kitchen or yard waste) and up to four bundles or kraft paper bags of yard waste.
- Containers, bundles, and kraft bags must not exceed 23 kg. /50 lbs. each. Containers must not exceed 99 L. Bundles may not exceed the dimensions of a kraft bag (16" x 12" x 35").
- Compostable liners may be used in containers although are not required.



## How To: Weekly Organics Collection

### Bagging Requirements

- Organics that contain kitchen and food waste must be placed in rigid, lidded containers.
- The Regional District recommends, although does not require, the use of compostable bags to help keep bins clean, reduce odour, and reduce animal attraction.



COMPOSTABLE  
Biodegradable Products Institute | US COMPOSTING COUNCIL

- **Do not use plastic or biodegradable bags. Biodegradable plastic does not compost**

### Accepted Materials



To receive collection, please:

TO THE CURB  
8:00 am



! If unacceptable materials are found in your Organics, the container will not be collected. Remove any unacceptable materials and it will be picked up on your next collection.

### Not Accepted Materials

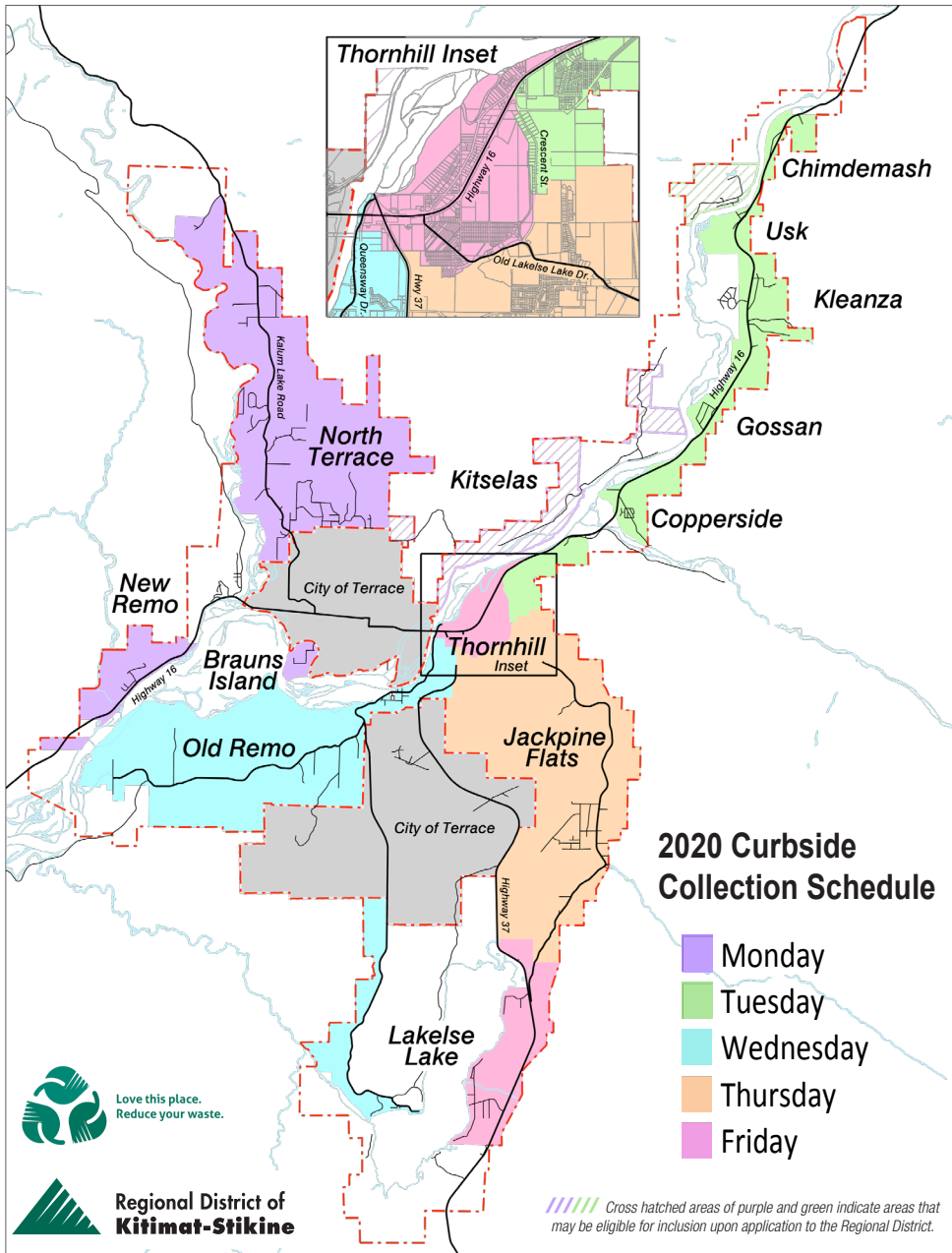
These items are **not accepted** and should be recycled or safely disposed of.

- Lumber and other wood products
- Rocks, soil, and sod
- All plastics
- Fecal matter and animal waste
- Diapers





## Service Area Map



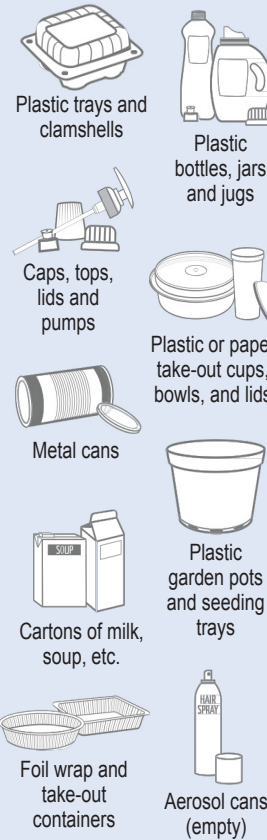
## How To: Bi-weekly Recycling Collection



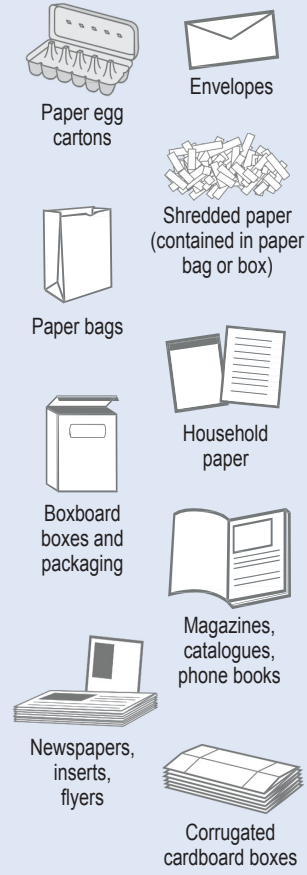
TO THE CURB  
**8:00 am**

### ACCEPTED

#### Mixed Containers



#### Mixed Paper



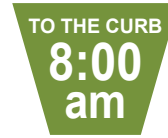
### NOT ACCEPTED

Do **NOT** place in curbside recycling



**GLASS, PLASTIC BAGS / OVERWRAP AND STYROFOAM ARE NOT ACCEPTED CURBSIDE. PLEASE RETURN TO DEPOT. DO-YOUR-PART RECYCLING IS LOCATED AT 3467 HWY 16 E.**

# 2020 Collection Schedule



**Legend**  Recycle  Garbage  Organics  No Collection

**No Collection on the Following Days:** New Year's Day, Family Day, Good Friday, Victoria Day, Canada Day, BC Day, Labour Day, Thanksgiving Day, Remembrance Day, Christmas Day, Boxing Day. **Collection occurs the following business day.**

MARCH 2020						
S	M	T	W	T	F	S
1	2	3	4	5	6	7
8	9	10	11	12	13	14
15	16	17	18	19	20	21
22	23	24	25	26	27	28
29	30	31				

APRIL 2020						
S	M	T	W	T	F	S
			1	2	3	4
5	6	7	8	9	10	11
12	13	14	15	16	17	18
19	20	21	22	23	24	25
26	27	28	29	30		

MAY 2020						
S	M	T	W	T	F	S
					1	2
3	4	5	6	7	8	9
10	11	12	13	14	15	16
17	18	19	20	21	22	23
24	25	26	27	28	29	30
31						

JANUARY 2020						
S	M	T	W	T	F	S
			1	2	3	4
5	6	7	8	9	10	11
12	13	14	15	16	17	18
19	20	21	22	23	24	25
26	27	28	29	30	31	

FEBRUARY 2020						
S	M	T	W	T	F	S
						1
2	3	4	5	6	7	8
9	10	11	12	13	14	15
16	17	18	19	20	21	22
23	24	25	26	27	28	29

JUNE 2020						
S	M	T	W	T	F	S
	1	2	3	4	5	6
7	8	9	10	11	12	13
14	15	16	17	18	19	20
21	22	23	24	25	26	27
28	29	30				

JULY 2020						
S	M	T	W	T	F	S
			1	2	3	4
5	6	7	8	9	10	11
12	13	14	15	16	17	18
19	20	21	22	23	24	25
26	27	28	29	30	31	

AUGUST 2020						
S	M	T	W	T	F	S
						1
2	3	4	5	6	7	8
9	10	11	12	13	14	15
16	17	18	19	20	21	22
23	24	25	26	27	28	29
30	31					

SEPTEMBER 2020						
S	M	T	W	T	F	S
		1	2	3	4	5
6	7	8	9	10	11	12
13	14	15	16	17	18	19
20	21	22	23	24	25	26
27	28	29	30			

OCTOBER 2020						
S	M	T	W	T	F	S
				1	2	3
4	5	6	7	8	9	10
11	12	13	14	15	16	17
18	19	20	21	22	23	24
25	26	27	28	29	30	31

NOVEMBER 2020						
S	M	T	W	T	F	S
1	2	3	4	5	6	7
8	9	10	11	12	13	14
15	16	17	18	19	20	21
22	23	24	25	26	27	28
29	30					

DECEMBER 2020						
S	M	T	W	T	F	S
		1	2	3	4	5
6	7	8	9	10	11	12
13	14	15	16	17	18	19
20	21	22	23	24	25	26
27	28	29	30	31		

## How To: Bi-weekly Garbage Collection One 121 L lidded can of bagged garbage not exceeding 23 kg / 50 lbs is accepted each collection.

### Missed Collection?

Contact Geier Waste Services about missed collections and the collection service. For billing and additional program information, contact the Regional District.

If you are physically unable to bring bins to the curb, please contact us to request "Container Management".

### What to do with Large Items?

Bulky items such as large furniture are not accepted in curbside collection. Please call or visit [www.rdks.bc.ca](http://www.rdks.bc.ca) for items that are accepted at the Thornhill Transfer Station.

### Oops!

"Oops Stickers" help you use the collection service correctly. Most "Oops Stickers" messages are triggered by safety. If the can is too heavy, contain visible dangerous materials, or too far/too close to the roadway, it may be unsafe for the collection hauler or other vehicles. The stickers will let you know.

### Have Extra Garbage?

Extra bag tags are available for \$2 each in a group of 10. A maximum of 4 bag tags may be used per collection. For excess medical wastes, contact us to apply for a **Medical Waste Exemption**.

