

Essential Contact Information:

Contact for curbside
pick-up inquiries

Contact for recycling
facility hours & inquiries



**GEIER WASTE
SERVICES**

250-638-1100

PO Box 38, Terrace, B.C. V8G 4A2

Phone: 250-638-1100

Email: geierwasteservices@citywest.ca



**DO-YOUR-PART
RECYCLING**

3467 Hwy 16E

Phone: 250-615-7692

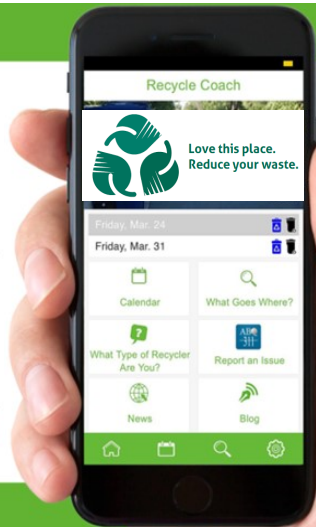
Website: www.doyourpart.ca

**Recycling and trash
information
at your fingertips!**

You get:

- A 'What Goes Where?' search tool
- A personalized collection schedule
- Collection Reminders, including for holiday changes
- And other notices regarding pick-up.
- Available on computers, tablets, and smartphone devices.

Download the **FREE Recycle Coach app**



Greater Terrace Area

Curbside Organics, Recycling
& Garbage Collection Schedule

INFORMATION – GUIDE – 2019

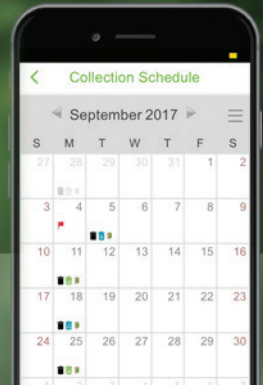


**NEVER MISS ANOTHER
COLLECTION DAY!**

Download the **FREE Recycle Coach™ app**



Your collection schedule
and notices at your
fingertips.



Revised: December 2018



Curbside Collection Guidelines

- Materials should be curbside by 8:00 am on the designated collection day, and no earlier than 10:00 pm on the day before collection day.
- Weight limit: 23 kg (50 lbs.) for all bins and bags.
- Place all containers within 2 m of the roadway.
- Remove empty containers no later than 10pm on collection day.
- Do not tie down lids of containers.

Bi-weekly Recycling Collection



- Unlimited recycling is accepted each collection. Use bags in your bins and ensure your recycling bin is identifiable.
- Flatten cardboard and place beside your recycling can in bundles not exceeding 1 cubic metre (36" x 36" x 36").
- Rinse containers to remove food residue.

Bi-weekly Garbage Collection

- Garbage must be bagged and placed in a rigid, waterproof can with a lid.
- For extra garbage, bag tags can be purchased at the Regional District office for \$2 each. A maximum of 4 bag tags can be used per collection.
- Not Accepted in Garbage Collection: Recyclables, bulky items such as furniture, appliances, electronic products, liquids, and organic materials.



Weekly Organics Collection

- Six items are accepted per collection: up to two containers with lids (kitchen or yard waste) and up to four bundles or kraft paper bags of yard waste.
- Containers, bundles, and kraft bags must not exceed 23 kg/ 50 lbs. each. Containers must not exceed 99 L. Bundles may not exceed the dimensions of a kraft bag (16" x 12" x 35").
- Compostable liners may be used in containers although are not required.



How To: Weekly Organics Collection

Bagging Requirements

- Organics that contain kitchen and food waste must be placed in rigid, lidded containers.
- The Regional District recommends, although does not require, the use of compostable bags to help keep bins clean, reduce odour, and reduce animal attraction.



COMPOSTABLE
Biodegradable Products Institute | US COMPOSTING COUNCIL

- **Do not use plastic or biodegradable bags. Biodegradable plastic does not compost**

Accepted Materials



To receive collection, please:

TO THE CURB
8:00 am



! If unacceptable materials are found in your Organics, the container will not be collected. Remove any unacceptable materials and it will be picked up on your next collection.

Not Accepted Materials

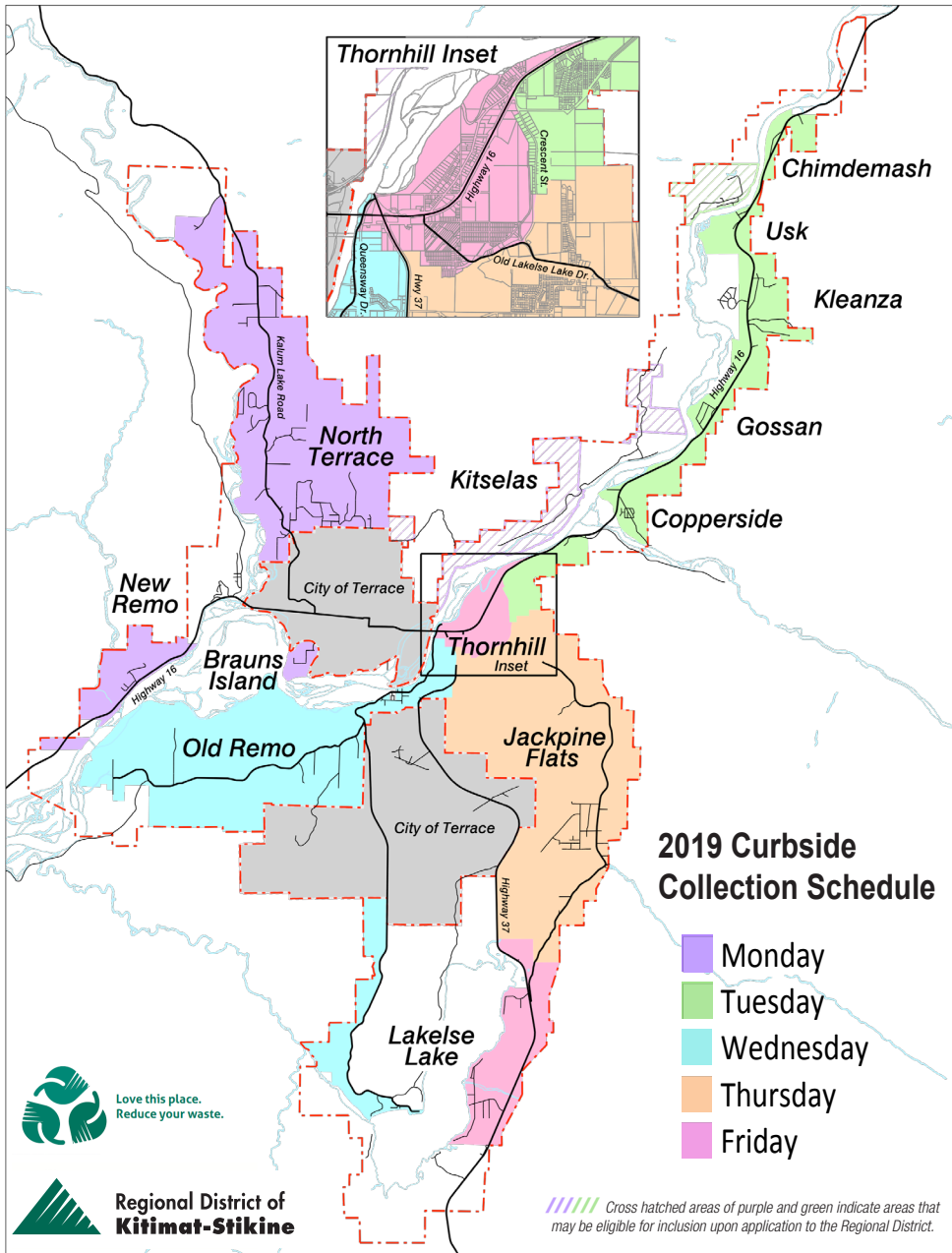
These items are **not accepted** and should be recycled or safely disposed of.

- Lumber and other wood products
- Rocks, soil, and sod
- All plastics
- Fecal matter and animal waste
- Diapers





Service Area Map



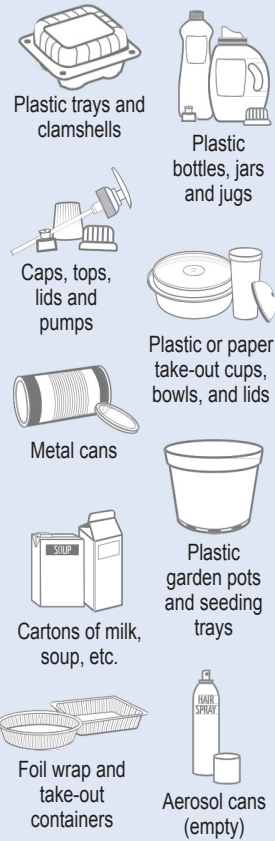
How To: Bi-weekly Recycling Collection



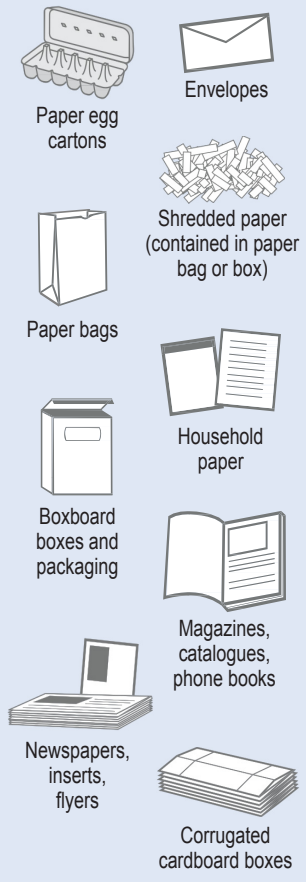
TO THE CURB
8:00 am

ACCEPTED

Mixed Containers



Mixed Paper



NOT ACCEPTED

Do NOT place in curbside recycling



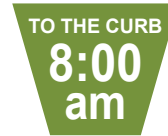
GLASS, PLASTIC BAGS / OVERWRAP AND STYROFOAM ARE NOT ACCEPTED CURBSIDE. PLEASE RETURN TO DEPOT. DO-YOUR-PART RECYCLING IS LOCATED AT 3467 HWY 16 E.

2019 Collection Schedule



Legend	Recycle	Garbage	Organics	No Collection
	■	■	■	■

No Collection on the Following Days: New Year's Day, Family Day, Good Friday, Easter Monday, Victoria Day, Canada Day, BC Day, Labour Day, Thanksgiving Day, Remembrance Day, Christmas Day, Boxing Day. Collection occurs the following business day.



JANUARY 2019						
S	M	T	W	T	F	S
		1	2	3	4	5
6	7	8	9	10	11	12
13	14	15	16	17	18	19
20	21	22	23	24	25	26
27	28	29	30	31		

FEBRUARY 2019						
S	M	T	W	T	F	S
					1	2
3	4	5	6	7	8	9
10	11	12	13	14	15	16
17	18	19	20	21	22	23
24	25	26	27	28		

MARCH 2019						
S	M	T	W	T	F	S
					1	2
3	4	5	6	7	8	9
10	11	12	13	14	15	16
17	18	19	20	21	22	23
24	25	26	27	28	29	30
31						

APRIL 2019						
S	M	T	W	T	F	S
	1	2	3	4	5	6
7	8	9	10	11	12	13
14	15	16	17	18	19	20
21	22	23	24	25	26	27
28	29	30				

MAY 2019						
S	M	T	W	T	F	S
			1	2	3	4
5	6	7	8	9	10	11
12	13	14	15	16	17	18
19	20	21	22	23	24	25
26	27	28	29	30	31	

JUNE 2019						
S	M	T	W	T	F	S
						1
2	3	4	5	6	7	8
9	10	11	12	13	14	15
16	17	18	19	20	21	22
23	24	25	26	27	28	29
30						

JULY 2019						
S	M	T	W	T	F	S
	1	2	3	4	5	6
7	8	9	10	11	12	13
14	15	16	17	18	19	20
21	22	23	24	25	26	27
28	29	30	31			

AUGUST 2019						
S	M	T	W	T	F	S
				1	2	3
4	5	6	7	8	9	10
11	12	13	14	15	16	17
18	19	20	21	22	23	24
25	26	27	28	29	30	31

SEPTEMBER 2019						
S	M	T	W	T	F	S
1	2	3	4	5	6	7
8	9	10	11	12	13	14
15	16	17	18	19	20	21
22	23	24	25	26	27	28
29	30					

OCTOBER 2019						
S	M	T	W	T	F	S
		1	2	3	4	5
6	7	8	9	10	11	12
13	14	15	16	17	18	19
20	21	22	23	24	25	26
27	28	29	30	31		

NOVEMBER 2019						
S	M	T	W	T	F	S
					1	2
3	4	5	6	7	8	9
10	11	12	13	14	15	16
17	18	19	20	21	22	23
24	25	26	27	28	29	30

DECEMBER 2019						
S	M	T	W	T	F	S
1	2	3	4	5	6	7
8	9	10	11	12	13	14
15	16	17	18	19	20	21
22	23	24	25	26	27	28
29	30	31				

How To: Bi-weekly Garbage Collection

One 121 L lidded can of bagged garbage not exceeding 23 kg / 50 lbs is accepted each collection.

Missed Collection?

Please contact Geier Waste Services, with questions regarding the collection service and missed collections. Contact the Regional District for billing and additional program information.

Please contact the Regional District to request **Container Management** if physically unable to bring bins to the curb.



What to do with Large Items?

Bulky items such as large furniture are not accepted in curbside collection. Please call or visit www.rdks.bc.ca for items that are accepted at the Thornhill Transfer Station.

Oops!

"Oops Stickers" are intended to help you use the collection service correctly. Most "Oops Stickers" messages are triggered by safety. If the can is too heavy, or if it is too far or too close to the roadway, it may be unsafe for the collector or other vehicles. The stickers will let you know.

Have Extra Garbage?

Extra bag tags are available at the Regional District office for \$2 each. A maximum of 4 bag tags may be used per collection. For excess medical wastes, contact the Regional District to apply for a **Medical Waste Exemption**.

